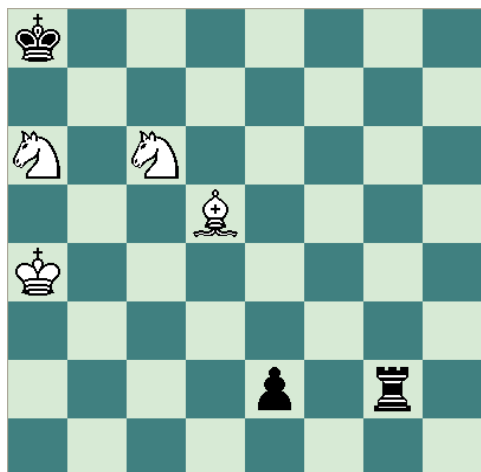


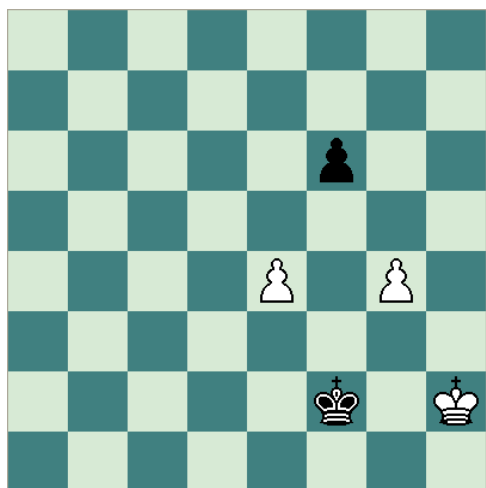
SOLUTIONS TO 2012 PUZZLES



(1) Unknown – [+0312.01a4a8]

Mate in 3, 2012

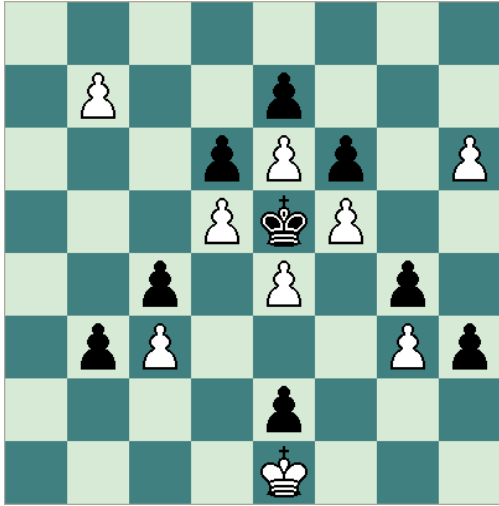
1.♔a5! [1.♔b5 ♖g8! (1...e1♚ 2.♘e7+ ♔a7 3.♘c8#) 2.♔b6 ♖c8 3.♘a7+ ♖c6+ 4.♙xc6#] 1...e1♚+ [1...♖g8 2.♘d4+ ♔a7 3.♘b5#] 2.♔b6 ♖g7 3.♘e7#



(2) Van der Heijden,H – [+0000.21h2f2]

Algemeen Dagblad, 18.01.2003

1.♔h1! [1.e5? fxe5 2.g5 e4 3.g6 e3 4.g7 e2 5.g8♚ e1♚ 6.♚g3+ ♔e2!=; 1.g5? fxg5 2.♔h3 (2.e5 g4 3.e6 g3+ 4.♔h3 g2 5.e7 g1♚ 6.♔h4 ♚e1-+) 2...♔f3=; 1.♔h3? ♔f3! 2.e5 fxe5 3.g5 e4 4.g6 e3 5.g7 e2 6.g8♚ e1♚=] But, what about 1...Kf1, which seems to change nothing in the initial position? But it does: 1...♔f1 [1...♔f3 A) Not 2.g5? fxg5 3.♔g1 draw. (If 3.e5 still attempting to win 3...♔f2 and White gets mated.) ; B) 2.e5! 2...fxe5 3.g5 e4 (3...♔f2 4.g6 e4 5.g7 e3 6.g8♚+-) 4.♔g1! e3 5.♔f1 e2+ 6.♔e1+-; 1...♔e3 2.e5 (2.g5? fxg5 3.e5?? ♔f2 4.e6 g4 5.e7 g3 6.e8♚ g2+ 7.♔h2 g1♚+ 8.♔h3 ♚g3#) 2...fxe5 3.g5 e4 4.g6+-; 1...♔g3 2.e5 fxe5 3.g5+-] 2.e5! fxe5 3.g5 e4 4.g6 e3 5.g7 e2 6.g8♚ e1♚ 7.♚g2#



(3) Zinar,M – [+0000.88e1e5]

ts21, 1985

1.h7 (not 1. b8♔? h2–+) **1...b2** **2.b8♚!** [2.b8♔? h2 3.h8♚ b1♔+ 4.♔xb1 h1♔+ 5.♚xh1=] **2...h2** **3.h8♚!** [3.h8♔? b1♔+ 4.♚xb1 h1♔+ 5.♔xh1=] **1-0**